

**FIRST NATIONAL CONVENTION**

**AMERICAN**

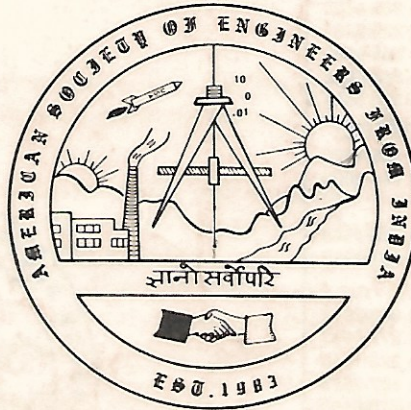
**SOCIETY of ENGINEERS**

**from**

**INDIA**

SATURDAY AUGUST 4, 1984

NORTHFIELD HILTON, 5500 CROOKS ROAD, TROY



*Engg. export 1*

*EEPC-1*

*333 N. MICH.*

*Chicago, IL 60601*

**THEME: Succeeding in Corporate America**

**American Society of Engineers from India**

22452 Kendall Avenue • Detroit, Michigan 48223



## A.S.E.I. COMMITTEES

### BOARD OF DIRECTORS:

Constancio F. Miranda, Chairman	(313) 927-1042
Hansraj Bajaria, Vice Chairman	(313) 277-5692
Yogindra (Yogi) Anand, Secretary	(313) 649-7363
Rajaram Khatri, Director	(313) 964-3000
Hari B. Bindal, Director	(313) 297-9063
Arun K. Kapoor, Director	(313) 643-2012
Jayprakash B. Shah, Director	(313) 585-1110
Ramesh C. Saxena, Director	(213) 391-1792
Vijay Saxena, Director	(313) 575-2619
Kunissery Sadanandan, Director	(609) 567-2675
S. Rao Palakodeti, Director	(313) 897-0426
Bhaskar Modur, Director	(313) 592-2439
Ambrish Reshamwala, Director	(313) 588-4800
Kalyan S. Bagga, Director	(313) 323-1610
Muzaffar A. Shaikh, Director	(309) 675-6157

### EXECUTIVE COMMITTEE:

Jayprakash B. Shah, President	(313) 585-1110
Nuruddin H. Kapadia, Vice President	(313) 435-9914
Umesh B. Rohatgi, Secretary	(313) 337-9957
Hari B. Bindal, Treasurer	(313) 297-9063
Mukesh J. Patel, Committee Coordinator	(313) 267-7338

### NEWSLETTER COMMITTEE:

Subhas C. Basu, Chairman	(313) 649-7162
Shafi Lokhandwala	(313) 477-9782
Hari B. Bindal	(313) 297-9063
N. T. Ashar	(313) 589-2064
K. C. Mehta	(313) 322-0461
S. R. Palakodeti	(313) 897-0426

### NATIONAL CONVENTION COMMITTEE:

Bhaskar Modur, Chairman	(313) 592-2439
Jaldhar Prasad	(313) 425-1530

### PUBLICITY COMMITTEE:

Kuldeep Gupta, Chairman	(313) 297-9066
Subhas C. Basu	(313) 641-1750

### NOMINATIONS & AWARDS COMMITTEE:

Ramesh Patel, Chairman	(313) 355-4600
Jawahar Marwah	(313) 323-5467
Rama Rao Cherukuri	(313) 535-9580
Mohindrapal Gill	(313) 344-6065
Vijay Mahida	(313) 585-5545

### CONSTITUTION & BY LAWS COMMITTEE:

Navin N. Pandya, Chairman	(313) 355-4600
Rajaram Khatri	(313) 964-3000

### AUDITING COMMITTEE:

Vijay Mahida, Chairman	(313) 585-5545
Umesh Rohatgi	(313) 337-9957

### MEMBERSHIP COMMITTEE:

Arun Kapoor, Chairman	(313) 643-2012
Hans Bajaria	(313) 277-5692
Kalyan Bagga	(313) 323-1610
K.P. Sadanandan	(313) 567-2675
Mazaffar Shaikh	(309) 675-6157
Ramesh Saxena	(213) 391-1792

### STUDENTS AFFAIRS COMMITTEE:

Constancio F. Miranda, Chairman	(313) 927-1042
Tappan K. Datta	(313) 577-3739
Rita Khatri	(313) 977-7051

### LONG RANGE PLANNING COMMITTEE:

Navin Pandya, Chairman	(313) 355-4600
P.D. Deo	(313) 349-3744
Ramesh C. Sharma	(313) 397-8686

### TECHNICAL SEMINAR COMMITTEE:

Yogi Anand, Chairman	(313) 649-7363
Ambrish Reshamwala	(313) 585-4500
Vijay Saxena	(313) 575-2619

### LIAISON COMMITTEE FOR ACTIVITIES IN INDIA:

S. Yedavalli, Chairman	(313) 588-1879
Kuldeep Gupta	(313) 297-9066
B.M. Jani	
S.C. Basu	(313) 649-7162

A.S.E.I. wishes to acknowledge the following members for their strenuous efforts in organizing the First National Convention.

**Chairman:**

Yogi Anand

**Publicity/Promotion:**

Kuldeep Gupta

**Fund Raising:**

Vijay Mahida  
Umesh Rohtagi

**Technical Sessions:**

Noor Kapadia  
Kamlesh Suri 435-12

**Exhibits:**

Mukesh Patel

**Entertainment:**

Arun Kapoor  
Jack Agrawal

**Food:**

Kanu Mehta 956-01

**Host/Reception:**

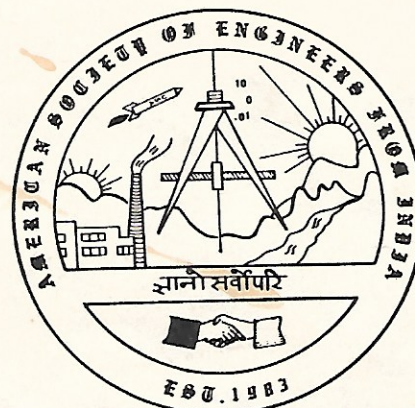
Hari Bindal

**Membership:**

Raj Khatri

**Student Affairs:**

Rita Khatri  
Shafi Lokhandwala



COMMITTEES UNDER BOARD  
CONSTITUTION - CHAIRMAN  
NOMINATIONS - R. PATEL  
MEMBERSHIP - V. MAHIDA  
AUDIT  
LONG RANGE PLANNING - A. RESHAMWALA

COMMITTEES UNDER EXE. COMM.  
PUBLICATION - H. BINDAL  
NEWSLETTER - S. BASU

Satyam Basu

237-8733

237-6867

609-7179



# **PATTANAIAK AND SHAW ASSOCIATES, LTD.**

*Accountants, Investments & Tax Consultants*

**7071 Orchard Lake Road • West Bloomfield, Michigan 48033**

**(313) 851-5197**

**(313) 851-5183**

**Ladukesh Pattanaik, M.B.A., LL.B**

**(313) 575-9545**

**S.B. Shaw, M.B.A., C.P.A.**

**(901) 365-8655**

**Jay L. Jain, Ph.D.**

**(219) 432-3288**

**Ramesh M. Patel, Sc.D., C.F.P.**

**(313) 559-0443**

## **TAX ADVANTAGED INVESTMENTS!**

- **Real Estate Programs with 2 to 3:1 tax deductions & investments tax credits\***

Apartments, Shopping Centers, Office Buildings, Hotels,  
Condominiums, and Single Family Housing Partnerships

- **High Tech Programs with Substantial Tax deductions and R&D tax credits\***
- **Waterfront Properties in HAWAII and FLORIDA**
- **Specialized investments for non-resident investment in India**

\* Excellent for Tax Retrieval from 1981, 1982 and 1983 Tax payments.

**MIRZA AHMED**  
**(313) 979-1070**

**JOE NAZARETH**  
**(313) 588-1191**

**VIJAY WALVEKAR**  
**(313) 642-1094**

For detailed information, please call:

**PATTANAIAK & SHAW ASSOCIATES, LTD.**

**Toll Free: 1-800-LAKSHMI**

*This advertisement is neither an offer to sell nor a solicitation to buy securities.  
Such an offer can only be made by the prospectus.*



# American Society of Engineers from India

## "SUCCEEDING IN CORPORATE AMERICA"

Saturday, August 4, 1984

### MODULE I 9:00 - 11:15 A.M.

#### "Style"

TOPIC	SPEAKER	OBJECTIVES
Dress for Success	G. R. Blair Joseph A. Bank, Clothier - Baltimore, Maryland	<ul style="list-style-type: none"><li>● Effective Impression</li><li>● Management &amp; Image Packaging</li></ul>
Mannerisms and Diction for Success	Kay Suri Writer Specializing in Indo American Culture	<ul style="list-style-type: none"><li>● Use of manners &amp; diction</li><li>● Manners &amp; diction, lack of which creates a negative image</li><li>● How to enhance mannerism and diction</li></ul>
Perceptions of the W.A.S.P. World	J.R. Lipscomb Business Planning & Development Center	<ul style="list-style-type: none"><li>● What are they?</li><li>● Myths and Realities</li><li>● How to use them to your advantage</li></ul>

### MODULE II 11:15 - 12:30 P.M.

#### "Oral Communication"

Reporting and Briefing	Film Presentation	<ul style="list-style-type: none"><li>● How to report and brief effectively</li></ul>
Assertiveness: Authority & Conflict	A. Aldridge Associate Professor E.M.U. - Interdisciplinary Programs	<ul style="list-style-type: none"><li>● Dealing effectively with organizational conflicts</li><li>● Managing stress</li></ul>
Resume & Job Interview	P. Higgins President, P.H. Associates	<ul style="list-style-type: none"><li>● How to write an effective resume</li><li>● How to obtain an interview</li><li>● How to have a successful job interview</li><li>● Ethnic background: Is that a hindrance?</li></ul>

### MODULE III 1:30 - 3:30 P.M.

#### "Attaining Financial Goals (Professional Alternatives)"

Advancing in Corporate World - Capstone	E. Gulda General Manager, Automotive Electronics Div. Rockwell International	<ul style="list-style-type: none"><li>● What does it take?</li><li>● Do's and don'ts</li></ul>
Entrepreneurship	V. Mahida President, Mahida ACES GROUP	<ul style="list-style-type: none"><li>● Opportunities?</li><li>● How to succeed at entrepreneurship?</li><li>● Pros and cons</li></ul>
Consulting	H. Bajaria President, Multiface Inc.	<ul style="list-style-type: none"><li>● Opportunities as a consultant</li><li>● How to succeed as one</li></ul>
Unbalanced Bidding	C. Miranda President, ACES, INC.	<ul style="list-style-type: none"><li>● How to improve your cashflow, Increase Profit and Minimize Risk</li></ul>



# The MAHIDA ACES GROUP of Firms (Subsidiaries/Affiliates)

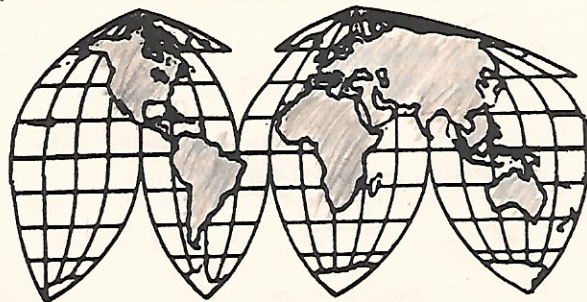
- **VIJAYSINH U. MAHIDA, P.C.**  
Certified Public Accountants  
(313) 651-8870
- **MAHIDA & VIRMANI, INC.**  
Management Consultants  
(313) 567-3328
- **MAHIDA SURVEYING, INC.**  
Real Estate & Condominium Development  
(313) 341-6972
- **METCO SERVICES, INC.**  
U.S./Germany/India Engineering Technology Transfer  
(313) 651-4211



*Offers The Asian-Indian Community,  
Especially Within Southeastern Michigan, Professional Services*

**Dr. Vijay Mahida, CPA, PE, LS**  
1311 E. Jefferson, Suite 116  
Detroit, Michigan 48207  
(313) 259-5115

— Over 25 Years in Private Practice —  
INDIA • WEST GERMANY • CANADA • U.S.A



**MAHIDA ACES GROUP**



# EVENING BANQUET

- 6:30 P.M. - POOLSIDE RECEPTION  
7:30 P.M. - DINNER  
8:30 P.M. - STATE OF A.S.E.I. ADDRESS - President JAY SHAH  
8:40 P.M. - AWARDS CEREMONY  
9:00 P.M. - ● KEYNOTE ADDRESS - PAUL GILL, Ford Motor Co.  
● GUEST SPEAKERS - U.S. Senator CARL LEVIN  
- Asst. Wayne Co. Executive JAMIL AKHTAR  
- Indian Consul General RAJNIKANT VERMA  
9:45 P.M. - ENTERTAINMENT  
11:45 P.M. - ADJOURN

## DINNER MENU

- GARDEN SALAD
- SPICY CHICKEN
- MOOG DAL/NAN
- RICE PILAF
- MANGO ICE CREAM

## ENTERTAINMENT

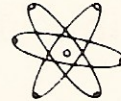
A renowned group of ten  
musicians/singers from Toronto will  
present music for listening and dancing.

Mr. Naqui Bilgrami who frequently appears on Toronto Swar-Snagam television program will lead the entertainment. He has guaranteed to bring to the dance floor even the most reserved engineers among us!



## COMPUSOFT INTERNATIONAL

MANAGEMENT SYSTEMS CONSULTANTS  
19334 FIVE POINTS  
DETROIT, MICH. 48240  
PHONE (313) 537-8213



## Associated Energy, Inc.

CONSULTING ENGINEERING SERVICES

Mechanical • Electrical • Chemical • Civil  
Energy • Quality Engineering

JACK AGRAWAL, PE, MBA  
(313) 977-0476

33766 Newport  
Sterling Heights, MI 48077

R K ASSOCIATES

(313) 977-7051

## RAJ KHATRI, P.E. & L.S.

CONSULTING CIVIL ENGINEER &  
REGISTERED LAND SURVEYOR  
35611 MAUREEN DR.  
STERLING HEIGHTS, MI 48077

## AMERICAN GRAPHITE CORPORATION

21756 DeQuindre Road  
Warren, Michigan 48091

GUY PATEL  
President

TEL: (313) 757-3540



## GMC Associates, Inc.

ENGINEERS • SCIENTISTS • ECONOMISTS • MANAGERS

SATYA B. SEHGAL, Ph.D.  
President

19720 Gerald  
Northville, MI 48167  
(313) 348-4425

### Midwest Mechanical Contractors

19200 W. 8 Mile Road  
Post Office Box 19220  
Detroit, Michigan 48219  
(313) 354-0010

## Midwest

R.S. Gabrielse, P.E.  
President

(313) 341-6972

## ASSOCIATED CONSULTING ENGINEERING SERVICES, INC.

CONSTANCIO F. MIRANDA, Ph.D., P.E.  
PRESIDENT

P.O. Box 21173  
COLLEGE PARK STATION  
DETROIT, MICHIGAN 48221

VIPIN C. MEHTA, p.e., m.a.p.a.

## MEHTA and ASSOCIATES, Ltd.

Engineers, Architects, Planners, Administrators

(815) 932-8999

133-D So. Kennedy Drive  
Bradley, IL 60915

- Transfer Super 8 and 16mm home movies onto video cassette
- Panasonic VCR for India
- Low, low price on blank tapes
- Franchise inquiries welcome

 TDK



## Video Showcase

2418 Elizabeth Lake Road (Behind Pontiac Mall)  
Pontiac, Michigan 48053  
(313) 681-3339

TEXAS

MICHIGAN

NEW YORK

# QUAD

## ENVIRONMENTAL TECHNOLOGIES CORPORATION

BERT deVRIES

4284 OVERLAND TRAIL  
KETTERING, OHIO 45429

513/293-8496



# FRIENDS OF THE SOCIETY

We would like to thank the following firms for their contributions. The success of the National Convention and, in fact, the vitality of the A.S.E.I. depends on the support of these firms. THANK YOU!

- 125 1\* ASSOCIATED CONSULTING ENGINEERING SERVICES, INC., DETROIT, MI. *MILAN DR*
- 2\* AMERICAN GRAPHITE CORPORATION, WARREN, MI. *244 PATEL*
- 25 3\* ASSOCIATED ENERGY, INC., STERLING HEIGHTS, MI.
- 100 4\* ACRO SERVICE CORP., LIVONIA, MI.
- 25 5\* COMPUSOFT INTERNATIONAL, DETROIT, MI.
- 6\* DIVERSIFIED ENGINEERING, INC., BIRMINGHAM, MI. *>*
- 7\* DELTA ASSOCIATES, INC., ROYAL OAK, MI.
- 350 8\* FORD MOTOR COMPANY- PLASTICS DIVISION, DEARBORN, MI.
- 9\* GMC ASSOCIATES, INC., NORTHVILLE, MI. *→*
- 10\* HMA CONSULTANTS, INC., MADISON HEIGHTS, MI.
- 25 11\* JAYA TRAVEL SERVICE, TROY, MI. *←*
- 12\* KABIL ASSOCIATES, COLUMBUS, OH. *←*
- 13\* KAPILA & ASSOCIATES, FARMINGTON HILLS, MI.
- 200 14\* MAHIDA ACES GROUP, DETROIT, MI.
- 125 15\* MEHTA AND ASSOCIATES, LTD., BRADLEY, IL.
- 16\* MIDWEST MECHNICAL CONTRACTORS, DETROIT, MI.
- 200 17\* MULTIFACE, INC., DEARBORN HEIGHTS, MI.
- 200 18\* PATNAIK AND SHAW ASSOCIATES, LTD., WEST BLOOMFIELD, MI.
- 19\* PARVAIZ MASSEY, SHEARSON AMERICAN EXPRESS, SYRACUSE, N.Y.
- 25 20\* PATEL BROTHERS, GARDEN CITY, MI.
- 25 21\* PRAYAG ASSOCIATES, NOVI, MI.
- 50 22\* PRASAD & ASSOCIATES, P.C., WESTLAND, MI.
- 125 23\* QUAD ENVIRONMENTAL TECHNOLOGIES CORPORATION, KETTERING, OH.
- 125 24\* RK ENGINEERING & SURVEYING ASSOCIATES, STERLING HEIGHTS, MI.
- no 25\* RAMA RAO & ALFRED, INC., DETROIT, MI.
- 26\* RESOURCE APPLICATIONS, INC., VIENNA, VA. *→ }*
- 27\* SHELADIA AND ASSOCIATES, RIVERDALE, MD.
- 50 28\* SIR SPEEDY PRINTING OF ROYAL OAK, MI.
- 20 29\* VIDEO SHOWCASE, PONTIAC, MI.

1175

100 AIR INDIA

125 Daily Corp.

125 Arcade

200

1525



# AIR-INDIA ANNOUNCES THE NEW EXECUTIVE CABIN TO LONDON AND INDIA.

## Extraordinary comfort at a comfortable price.

Next time you fly to London or India move up to Air-India's fabulous new Executive Cabin. There's lots more room. And there's also a lot more.

For instance, our new Executive Cabin gives you wide new seats with over 3 full feet of leg room. Every passenger gets a newspaper, sleeping masks, slippers and a headset for listening to music (including two channels of Indian music) or watching the movie. Drinks are complimentary — including champagne and wine. And dinner includes your choice of delicious Indian or Continental cuisine and it arrives on porcelain plates with damask table linens.

Air-India's new Executive Cabin. It's more room. And more.  
At a most comfortable price. See your travel agent.

**AIR-INDIA**  
**WE'RE YOUR AIRLINE**

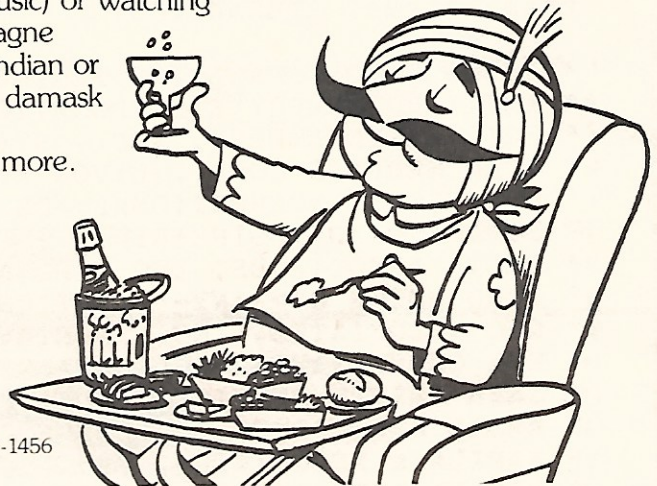
400 Park Avenue, New York, NY 10022

Executive Reservation Service

Monday through Friday — 9 AM to 5 PM

Continental U.S. 800-223-2250; NY State 800-442-4455; N.Y. City 212-407-1456

**OR CALL YOUR MICHIGAN, OHIO  
OR KENTUCKY TRAVEL AGENT**



## KAPILA

### SINGLE SOURCE SERVICES FOR DEVELOPMENT, DESIGN AND CONSTRUCTION

The normal three phases of development, design and construction require three different sources to take a project to completion. . . . Single Source Services tremendously reduce time and costs.

We have the exclusive capability, expertise and licensing to take a project from raw land to rezoning, surveying, land splitting, securing financing, designing of buildings (custom homes, medical clinics, apartments, shopping centers, etc.) and do the actual construction. The phases are merged to value engineer highest quality at the lowest possible cost.

*Services are also individually available for each phase, or part of phase, as required.*

Please feel free to contact us for general or specific information and discussion. Avail yourself of our many years of experience.

**(313) 851-9755**

31333 Thirteen Mile Road • Farmington Hills, MI 48018

**Kapila & Associates**

*Land Surveys, Project Development, Planning,  
Architectural & Engineering Design of Buildings*

**Kapila Construction Company, Inc.**

*Developers and Custom Builders of Residential Homes*



**Kapila Contracting Company, Inc.**

*Construction of Medical Clinics, Apartments, Shopping Centers and Other Commercial,  
Industrial and Institutional Buildings*



*We Can Bring Our Expertise To Your Company. . .*

# **Multiface, Inc.**

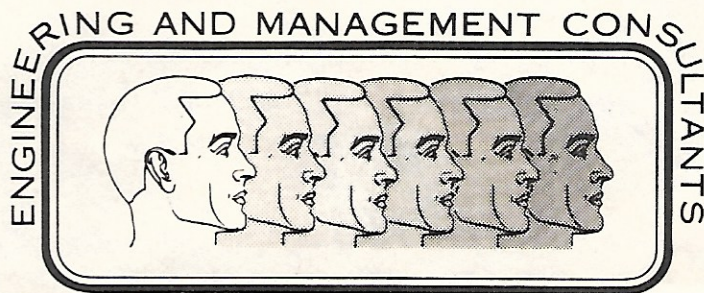
Engineering and Management Consultants Since 1978

## ***Specializing in Training and Problem Solving***

### **Present areas of concentration:**

- Statistical Process Control
- Quality Control Systems
- Reliability Engineering
- Management Systems
- Productivity Improvement

GM, FORD, ALLEN-BRADLEY, SELLER-GLOBE,  
THERM-O-DISC, BENDIX, FEDERAL MOGUL and  
NATIONAL STEEL are among our long list of clients



## **MULTIFACE, INC.**

**H.J. Bajaria, President**

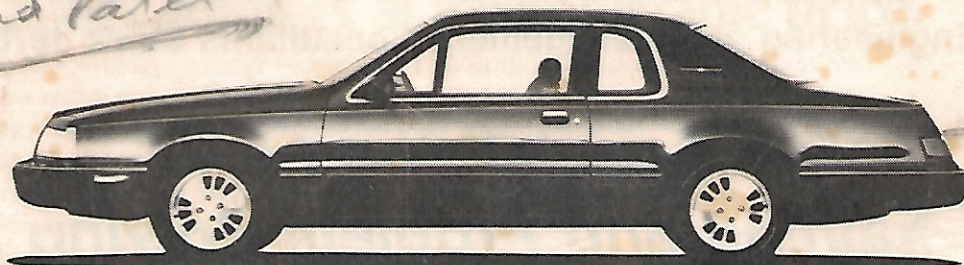
27206 Wilson

Dearborn Heights, Michigan 48127

**313-277-5692**



# Thunderbird. The way it looks...



## improves the way it drives.

Thunderbird's design has much to do with the way it holds the road. Thunderbird's fluid lines were tested over 500 hours in a wind tunnel to make the shape of the car contribute to cornering and handling stability.

### **The design of the front.**

Underneath the integrated front bumper is an air dam. It works with the wind to keep the weight of the car pressing down

on the front tires. And the more a tire presses to the road, the better it holds the road.

### **The design of the doors.**

Thunderbird's doors curve into the roof. This smooths and quiets the airflow, improving aerodynamic efficiency.

### **The design of the rear.**

The trunk lid incorpo-

rates another aerodynamic shape called a spoiler which further reduces "lift" and aerodynamic drag. (P.S. Underneath this lid, you'll find a trunk larger than you'd ever think possible in a car this smooth.)

### **Best-built American cars.**

When we say "Quality is Job 1," we are talking about more than a commitment. We are talking about results. An independent survey concluded Ford

makes the best-built American cars. The survey measured owner-reported problems during the first three months of ownership of 1983 cars designed and built in the U.S.

### **Pure Thunderbird.**

Thunderbird. See how it moves. Consider the shape. It is all one. And it is uniquely Thunderbird.

**Have you driven a Ford... lately?**



Get it together—Buckle up.