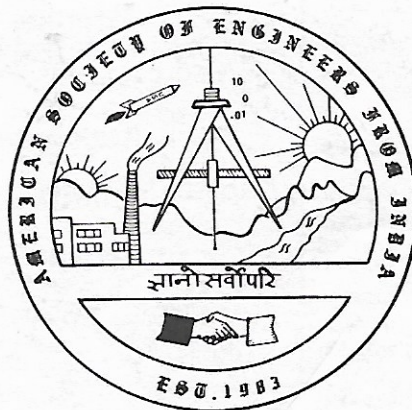


**SECOND NATIONAL CONVENTION**

**AMERICAN**  
**SOCIETY of ENGINEERS**  
**from**  
**INDIA**

SATURDAY, AUGUST 17, 1985  
NORTHFIELD HILTON, 5500 CROOKS ROAD, TROY



**THEME: US/INDIA BUSINESS OPPORTUNITIES**

**American Society of Engineers from India** 

22452 Kendall Avenue • Detroit, Michigan 48223



## A.S.E.I. COMMITTEES

### BOARD OF DIRECTORS:

Bajaria, Hansraj, Chairman	(313) 277-5692
Shah, Jayprakash, Vice Chairman	(313) 585-1110
Kapadia, Nuruddin, Secretary	(313) 435-9914
Anand, Yogindra	(313) 649-7363
Bindal, Hari	(313) 297-9355
Gupta, Kuldeep	(313) 297-9066
Kapoor, Arun	(313) 637-7012
Khatri, Rajaram	(313) 964-3000
Miranda, Constancio	(313) 927-1042
Naik, Tarun	(414) 963-6696
Pandya, Navin	(313) 355-4600
Prasad, Jaldhar	(313) 721-2100
Sadanandan, Kunissery	(215) 763-8096
Saxena, Ramesh	(213) 391-1792
Saxena, Vijay	(313) 575-2619

### CHAIRPERSONS-CHAIRMAN'S COMMITTEES:

C1: Nomination	
Patel, Ramesh	(313) 355-4600
C2: Constitution	
Miranda, Constancio	(313) 927-1042
C3: Audit	
Mahida, Vijay	(313) 259-5115
C4: Longrange Planning	
Reshamwala, Ambrish	(313) 588-4800

### EXECUTIVE COMMITTEE:

Anand, Yogindra, President	(313) 649-7363
Suri, Kamlaish, Vice President	(313) 435-1286
Mehta, Kanu, Secretary	(313) 956-5489
Bindal, Hari, Treasurer	(313) 297-9355
Shah, Sudhir, Committee Coordinator	(313) 355-4600

### CHAIRPERSONS-PRESIDENTS' COMMITTEES:

P1 : Publications	
Bindal, Hari	(313) 297-9355
P2 : Newsletter	
Tejwani, Ashok	(313) 649-7131
P3 : Program Development	
Agarwal, Deepak	(313) 263-6239
P4 : Conventions	
Mehta, Kanu	(313) 956-5489
P5 : Educational	
Naik, Tarun	(414) 963-6696
P6 : Economic Benefits	
Shah, Kundan	(313) 573-1646
P7 : Employment Exchange	
Ghosh, Amar	(313) 552-8255
P8 : Business Development Awareness	
Pandya, Navin	(313) 355-4600
P9 : Investment Awareness	
Patel, Ramesh	(313) 355-4600
P10: Publicity	
Gupta, Kuldeep	(313) 297-9066
P11: Engineering Excellence	
Singh, Harkrishan	(313) 565-7380
P12: Technical Exchange with India	
Rohatgi, Umesh	(313) 337-9957
P13: Legal Affairs	
Akhtar, Jamil	(313) 224-0286
P14: Technical Activities	
Gangopadhyay, Chitta	(313) 577-3789
P15: Membership	
Suri, Kamlaish, Chairperson	(313) 435-1286

### ASEI CHAPTER PRESIDENTS:

Chicago, Illinois	
Bhatia, Navin, President	(312) 269-7152
Detroit, Michigan	
Khatri, Rajaram, President	(313) 964-3000

**A.S.E.I. wishes to acknowledge the following members for their strenuous efforts in organizing the Second National Convention.**

<b>Chairman:</b>	Kanu Mehta
<b>Technical Sessions:</b>	Umesh Rohatgi
<b>Publicity/Promotion:</b>	Kuldeep Gupta
<b>Fund Raising:</b>	Ashok Tejwani Kuldeep Gupta
<b>Exhibits:</b>	Raj Khatri
<b>Host:</b>	Paul Gill
<b>Reception:</b>	Yogi Anand
<b>Entertainment:</b>	Hari Bindal
<b>Awards:</b>	Harkrishan Singh
<b>Chapter:</b>	Yogi Anand
<b>Food:</b>	Jack Agrawal
<b>Student Affairs:</b>	Rita Khatri



## From the Constitution of the American Society of Engineers from India:

### PREAMBLE

"We, the Engineering, Architectural, and other allied professionals of Indian Origin i.e. connected with India by birth, education, or ancestry, and residing in North America have felt the need to organize an association for the pursuit of the enhancement of our technical, professional, educational, and economic benefits. Therefore, we, hereby establish an organization to be called American Society of Engineers from India (ASEI)" and adopt the Constitution and Bylaws on August 24th, 1983 in Detroit, Michigan - U.S.A."

The Program Committee has selected the most timely topic of interest to our membership and the engineers of Indian origin in general, US-INDIA BUSINESS OPPORTUNITIES, as the theme for the Second National Convention of American Society of Engineers from India.

I believe the era has come in which quite a few of us seeking Business as well as Investment Opportunities in India are ready for action. Our desires simply do not stop there. Many of us are interested in Transfer of the Latest Technology to India. Some of our members are deeply interested in the Development of rural India.

Where can we find immediately usable and action oriented information? The Second National Convention is organized with these interests in mind. You will hear from the experts who deal with the US-INDIA business issues as part of their jobs and have agreed to share their insights. You will also hear experiences of the people who have successfully executed US-INDIA projects.



I hope you take this opportunity to be together with other professionals in sharing the valuable information of common interests.

Hans J. Bajoria  
Chairman, Board of Directors  
American Society of Engineers from India



# The **MAHIDA ACES GROUP** of Firms

- ★ **METCO SERVICES, INC.**  
Management, Engineering & Technical Consultants  
(313) 259-5115
- ★ **MAHIDA SURVEYING, INC.**  
Land Surveying  
(313) 259-5116
- ★ **VIJAYSINH U. MAHIDA, P.C.**  
Certified Public Accountants  
(313) 259-5115
- ★ **MAHIDA & VIRMANI, INC.**  
Management Consultants  
(313) 259-5116

## **OFFERS INTEGRATED PROFESSIONAL SERVICES**

**Dr. Vijay Mahida, CPA, PE, LS**

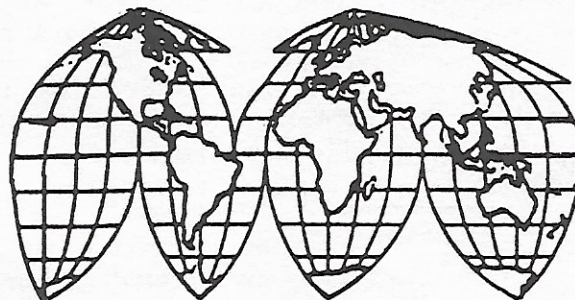
1311 E. Jefferson, Suite 116

Detroit, Michigan 48207

(313) 259-5115

★ Over 25 years in Private Practice ★

U.S.A ★ CANADA ★ WEST GERMANY ★ INDIA



**MAHIDA ACES GROUP**



## ***Gandhi Urges Expatriates To Return Home***

If love of country were enough, most foreign engineering students would choose to return home rather than work in the U.S.

But for many countries with "brain drain" problems, low pay, lack of job opportunities, and high taxes are just a few of the factors that induce foreign technical grads not to return home.

Noting this problem, Indian Prime Minister Rajiv Gandhi told attendees at a National Press Club luncheon June 14 that the emigration of Indian students actually provides an "opportunity" in the long-term. Gandhi said as India moves more into the high-tech age, Indian professionals can take advantage of American technological know-how they've acquired in the U.S. By returning to their homeland and applying their expertise they can make a major contribution toward their country's development.

After the press luncheon, Gandhi traveled to the Houston area the next day, and told a waiting crowd of 2000 Indians, "How curious it is that Indians, when they are abroad, have tremendous initiative . . . but that is something we find slightly lacking in India today."

Gandhi, who once studied mechanical engineering at Cambridge University in England and later became a commercial airline pilot, added, "We appreciate the contributions you are making. We realize the difficulties you would face coming back," he said, indicating that he is determined to ease the "rules, regulations, and tax policy" that have caused Indian engineers and scientists to leave their country.

Pointing out the country's special needs, Gandhi said India needs to keep abreast of advances in agriculture, communications, meteorology, and prospecting.



*Indian Prime Minister Rajiv Gandhi.*

**Published by N.S.P.E. in  
ENGINEERING TIMES**





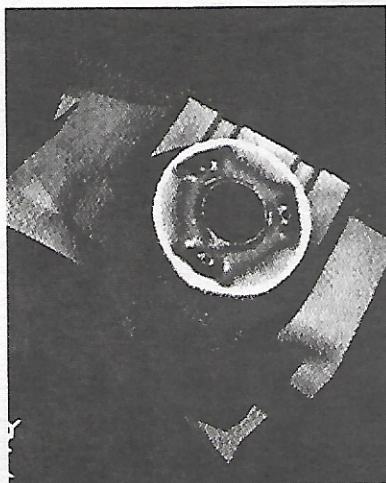
# ENGINEERING MECHANICS RESEARCH CORPORATION

P.O. Box 696 • TROY, MICHIGAN 48099 U.S.A • Tel: (313) 643-6222 • Telex: 469232

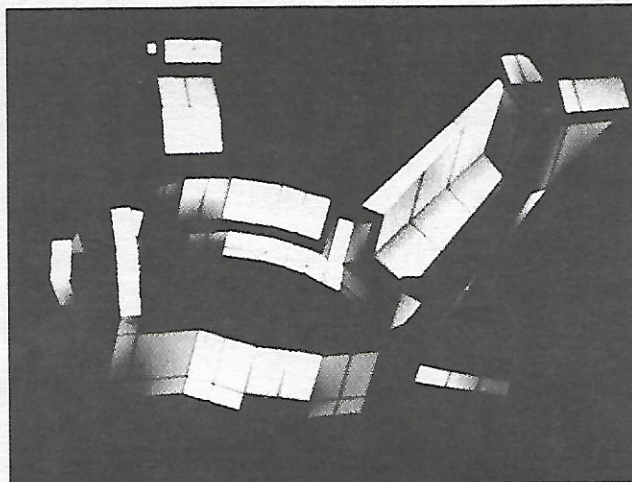
## NISA/DISPLAY

WHY BUY NISA/DISPLAY RATHER THAN OTHER FINITE ELEMENT PROGRAMS?

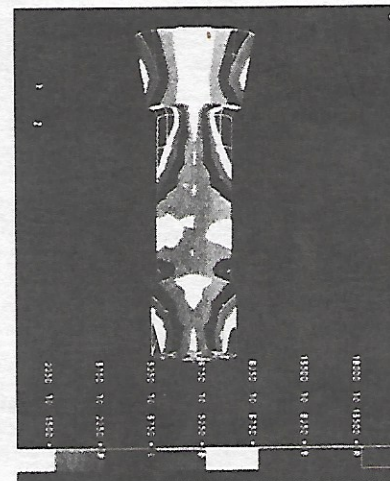
- LOWEST COMPETITIVE PRICING ■ OUTSTANDING PERFORMANCE ■ EXCELLENT PRODUCT SUPPORT ■ FREE MULTIPLE COPIES ■ PRE- and POST-PROCESSING INTERFACES WITH ALL MAJOR CAD/CAM SYSTEMS ■ AVAILABILITY ON ALL MAJOR COMPUTERS: MAINFRAME – PERSONAL COMPUTERS ■ EMRC'S UNIQUE FREE THREE MONTH TRIAL OFFER TO QUALIFIED CUSTOMERS ■ NISA'S COMPOSITE CAPABILITIES ARE CONSIDERED THE BEST BY MANY CORPORATIONS



NISA/MOVIE.BYU INTERFACE



NISA/DISPLAY



NISA/PATRAN INTERFACE

### NISA: ANALYSIS CAPABILITIES

- STATIC ANALYSIS – LINEAR & NONLINEAR ● STEADY STATE & TRANSIENT HEAT TRANSFER – LINEAR & NONLINEAR
- CONDUCTION, CONVECTION, RADIATION ● STEADY STATE & TRANSIENT DYNAMIC CAPABILITIES
- RANDOM VIBRATION ● SHOCK SPECTRUM ● FREQUENCY RESPONSE ● ELECTROMAGNETIC FIELD PROBLEMS

### DISPLAY: INTERACTIVE GRAPHICS CAPABILITIES

- GENERATES MESH ● MODIFIED MESH ● VERIFIES MESH ● INDICATES ELEMENT DISTORTION
- MINIMIZES WAVEFRONT ● GENERATES 3D VARIABLE THICKNESS ELEMENTS FROM SHELL ELEMENTS

**LICENSE THE ENTIRE NISA/DISPLAY PROGRAM OR ONLY THOSE MODULES/INTERFACES YOU SELECT**

- NISA STATIC ● NISA DYNAMIC ● NISA-COMPOSITES ● NISA FATIGUE ● NISA HEAT TRANSFER
- SEPS (SECTIONAL PROPERTIES) ● SAMS (MODAL ANALYSIS) ● ISOCROS (SECTIONAL PROPERTIES PROGRAM)
- DISPLAY INTERACTIVE GRAPHICS ● 3D FLUID FLOW ● AISC/ASCE CODE CHECKING ● MANY OTHERS

**INSTALL NISA/DISPLAY ON YOUR MAINFRAME, SUPERMINI, MINI, MICRO, OR PERSONAL COMPUTER**

- ALPHA-MICRO ● AMDAHL ● APOLLO ● BURROUGHS ● CADLINC ● CDC ● COMPUTERVISION APU, CDS 3000 & 4000 (SUN MICRO)
- CRAY ● DATA GENERAL ● GOULD SEL ● HARRIS ● HITACHI ● HONEYWELL ● HP1000 F, A.600, A.700, A.900 ● HP9000
- IBM (ALL OPERATING SYSTEMS, ALL COMPUTERS SUCH AS 370, 4300, 3080 SERIES & P.C. XT/AT ● PERKIN-ELMER ● PRIME
- SUN MICRO ● VAX ● UNIVAC ● THE SUPER COMPUTER, ELXSI ● AND OTHERS

### GRAPHICS DEVICES (NISA is independent of graphical devices)

- ADAGE ● AED ● HP ● IBM 3279 & 5080 ● LEXIDATA ● MEGATEK ● RAMTEK ● RASTER TECHNOLOGY ● SEIKO
- SILICON GRAPHICS ● TEKTRONIX ● MANY OTHERS

**NISA IS INTERFACED WITH THE PRE- & POST-PROCESSORS OF THE FOLLOWING CAD/CAM SYSTEMS**

- APPLICON ● AUTO-TROL ● ANVIL 4000 ● CADAM ● CAEDS ● CALMA ● COMPUTERVISION ● GERBER ● GRAFTEK
- INTERGRAPH ● MOVIE.BYU ● PATRAN-G ● SUPERTAB ● AND MANY, MANY, OTHERS

**PURCHASE OR LEASE NISA/DISPLAY JUST ONCE, EMRC WILL PROVIDE FREE ADDITIONAL COPIES.**

- SAME PRICE FOR 1-100 NISA INSTALLATIONS ON SAME BRAND OF COMPUTER SYSTEM AT ONE SITE. FOR EACH DIFFERENT COMPUTER SYSTEM AT ONE SITE, THE ONLY ADDITIONAL CHARGE IS THE COST OF AN ANNUAL MAINTENANCE CONTRACT.
- PRICE RANGE: \$500-\$2000./MO. (LEASE), PERSONAL COMPUTER \$1000.-\$5000. (PURCHASE), MINI COMPUTER \$5000.-\$30,000. (PURCHASE), SUPERMINI AND MAINFRAME \$10,000-\$60,000 (PURCHASE). ● ALL PRICES ARE FOR UNLIMITED USAGE

**EMRC WORLDWIDE SALES & SUPPORT OFFICES: ARGENTINA, AUSTRALIA, BELGIUM, ENGLAND, FRANCE, GERMANY, GREECE, HONG KONG, INDIA, ITALY, JAPAN, KOREA, THE MIDDLE EAST, THE NETHERLANDS, SINGAPORE, SOUTH AFRICA, SWEDEN, SWITZERLAND, TAIWAN, AND OTHERS.**

**CONTACT: DR. KANT S. KOTHAWALA, ENGINEERING MECHANICS RESEARCH CORPORATION, 1707 WEST BIG BEAVER ROAD, TROY, MICHIGAN 48084 (U.S.A.), TELEPHONE (313) 643-6222, TELEX 469232**









A FULL SERVICE ENGINEERING COMPANY  
A LEADER IN THE FIELDS OF:

- FINITE ELEMENT ANALYSIS.
- KINEMATIC AND DYNAMIC ANALYSIS.
- MODAL TESTING.
- TOLERANCE/VARIATION ANALYSIS.
- DURABILITY TESTING.
- VIBRATION TESTING AND STRESS ANALYSIS.
- CUSTOM TEST SYSTEMS.

SMTc CORPORATION  
26091 SHERWOOD  
WARREN, MICH. 48091



RAJ BODEPUDI, Ph.D.  
INVESTMENT ADVISOR

20 NORTH WACKER DRIVE  
SUITE 1711  
CHICAGO, ILLINOIS 60606  
(312) 372-3281  
1-800-237-3762 EXT. 923

Dr. Raj Bodepudi received his Ph.D. in Economics from Wayne State, where he won the Blum Award for writing the best doctoral exams and received his M.A. in Economics, First Rank, from Osmania University. Dr. Raj is the founder of Lincoln Equities, Inc., a Chicago based investment banking and brokerage firm and a former Vice President of Oppenheimer & Co. He is currently

a registered investment advisor and a consultant to many corporations & pension plans.

Lincoln Equities, Inc., Chicago, IL 60606.  
(312) 372-3280

*We Can Bring Our Expertise To Your Company. . .*

## Multiface, Inc.

Engineering and Management Consultants Since 1978

*Specializing in  
Training and Problem Solving*

**Present areas of concentration:**

- Statistical Process Control
- Quality Control Systems
- Reliability Engineering
- Management Systems
- Productivity Improvement

GM, FORD, ALLEN-BRADLEY, SELLER-GLOBE,  
THERM-O-DISC, BENDIX, FEDERAL MOGUL and  
NATIONAL STEEL are among our long list of clients

**MULTIFACE, INC.**

**H.J. Bajaria, President**

27206 Wilson  
Dearborn Heights, Michigan 48127

**313-277-5692**



# **PATTANAİK and SHAW Associates, Ltd.**

## **Accountants, Investments & Tax Consultants**

**7071 Orchard Lake Rd.  
W. Bloomfield, MI 48033  
(313) 851-5197  
(313) 851-5183**

### **Tennessee**

S.B. Shaw, MBA, CPA  
3356 Dungreen  
Memphis, TN 38118  
(901) 365-8655

### **Indiana**

Dr. J.L. Jain  
7335 W. Jefferson  
Fort Wayne, IN 46804  
(219) 432-5246

### **Indianapolis Area:**

Peter Surana  
(317) 888-8592

### **New York**

Deepak Gulati, MBA  
301 E. 78th St.  
Suite 16 E  
New York, NY 10021  
(212) 794-8166  
Manu Patel  
Sebastian Court Rd., No. 3  
Hopewell Junction, NY 12533  
(914) 896-6125

### **Illinois**

B.C. Dash, MBA  
801 N. Cass Ave.  
Suite 300  
Westmont, IL 60540  
(312) 789-3311

### **Chicago Area:**

Jesi Shah, BS  
(312) 259-8001  
Manu G. Patel, MS, MBA, CPA  
(312) 747-9754  
Narayan Das, Ph.D.  
(312) 887-1148  
Surya K. Misra  
(312) 355-5193

### **Florida**

Durga Misra  
6000 Twin Lakes Dr.  
S.W. 64th Ave.  
Miami, FL 33143  
(305) 592-8680

### **Tampa Area:**

Mahendra Doshi  
(813) 870-0040

### **Hawaii**

John Mitchell  
(808) 734-1268

### **Kentucky**

Dr. A.K. Mohanty  
(606) 623-7146

### **Louisiana**

Jitu Patel  
(504) 347-3235

### **Michigan**

Carl Moore  
Moin Ansari  
Willis Birch  
Dennis Clifford  
Udai Sangwan  
Madhav Palnitkar  
Ladukesh Pattanaik  
Joseph Nazareth  
Mirza M. Ahmad  
Ramesh Patel  
Ramon Villanueva  
Hare K. Patanaik  
(313) 851-5197  
(800) LAKSHMI

### **Maryland/DC**

Rudy Sinha  
(301) 864-6556  
Chandu Doshi  
(301) 859-5375  
Pratap Das  
(202) 651-5160

### **Massachusetts**

Mangal Gupta  
(413) 637-1100

### **Missouri**

Rajesh Vora  
(314) 423-6065

### **Ohio**

Jayant Patel  
(513) 426-5881

### **South Carolina**

Ashok Swain  
(803) 281-5652

### **Texas**

M.R. Yousuf, MBA, CPA  
(713) 441-4619

## **TAX PLANNING TOOLS! INVESTMENTS!**

- **Real Estate Programs with 2 to 3:1 tax deductions & tax credits\***  
Apartments, Shopping Centers, Office Buildings, Hotels, Condominiums, and Single Family Housing Projects
- **Waterfront Properties in HAWAII and FLORIDA**
- **High Tech Programs with Substantial Tax deductions & tax credits**

**• Specialized Investments for non-resident investment in India in Housing, Hotels & Office Buildings, Technology Transfer, Computerization and Manufacturing Operations**

- Some with substantial cash flow
- Some with very little or no cash down

**\* INVESTMENT TAX CREDIT,  
HISTORICAL PRESERVATION CREDIT  
R and D CREDIT**  
Excellent for Tax Retrieval from 1982, 1983 & 1984

*For detailed information, please call*  
**PATTANAİK & SHAW ASSOCIATES, LTD.**

A subsidiary of LAKSHMI INVESTMENT GROUP, Inc.

AAFP/SIPC/NASD Broker Dealer

**Toll Free: 1-800-LAKSHMI**



# American Society of Engineers from India

## *A Seminar on "US/INDIA Business Opportunities"*

Northfield Hilton, Troy, Michigan

Saturday, August 17, 1985

1:30-6:00 P.M.

**1:30 SEMINAR REGISTRATION**

**2:00 WELCOME REMARKS BY CHAIRMAN**

### **MODULE I, 2:05 - 3:00 P.M.** *"Business/Investment Opportunities"* Moderator: Ramesh Patel

TOPIC	SPEAKER	OBJECTIVE
India's Recent Liberal Trade Policies	<ul style="list-style-type: none"><li>• P.S. Sahai Minister of Commerce Indian Embassy, Wash. D.C.</li></ul>	<ul style="list-style-type: none"><li>• Indian Govt's New Trade Policies in Regards To: Industrial Joint Ventures, Import/Export and Tax</li><li>• How to 'Cash-In' on New Opportunities?</li></ul>
Business Opportunities	<ul style="list-style-type: none"><li>• M. Santugi Director International Trade State of Michigan, Lansing</li></ul>	<ul style="list-style-type: none"><li>• How is Indian Economic Climate Perceived from U.S. Point-of-View?</li></ul>
Import Export Opportunities	<ul style="list-style-type: none"><li>• P.K. Banerjee Engrg. Export Promotion Council Chicago, Ill.</li></ul>	<ul style="list-style-type: none"><li>• What are They?</li></ul>
Types of Investment	<ul style="list-style-type: none"><li>• Dr. Mathur India Investment Center New York, N.Y.</li></ul>	<ul style="list-style-type: none"><li>• How to Make Your Money Grow.</li></ul>



**MODULE II, 3:05 - 4:00 P.M.***"Transfer of Technology/Development of Rural India"*

Moderator: Umesh Rohatgi

TOPIC	SPEAKER	OBJECTIVE
Technology Transfer	<ul style="list-style-type: none"><li>• G.S. Cole Principal Staff Engr. Ford Motor Co. Dearborn, MI</li><li>• P.K. Rastogi Head, Metallurgy Lab Inland Steel, Gary, IN</li></ul>	<ul style="list-style-type: none"><li>• How Other Developing Countries Are Doing It?</li><li>• 'TOKTEN' - Transfer of Knowledge Through Expatriate Nationals</li></ul>
Village Development	<ul style="list-style-type: none"><li>• Dr. C.N. Kashkari Elect. Engrg. Dept Univ. of Akron, Ohio</li><li>• H.S. Lamba India Development Center Chicago, Ill</li><li>• S.N. Subbarao Director National Youth Project, India. Mahatma Gandhi Seva Ashram, Chambal, India</li></ul>	<ul style="list-style-type: none"><li>• Needs of Rural India</li><li>• Uplifting of Villages</li></ul>

**COFFEE BREAK 4:00 - 4:15 P.M.****MODULE III, 4:15 - 6:00 P.M.***Case Studies: "Successful Business People"*

Moderator: Kanu Mehta

TOPIC	SPEAKER	OBJECTIVE
	<ul style="list-style-type: none"><li>• Raj Gopal Head, Indus Technology Pittsburgh, PA</li><li>• Kant Kothawala President, Engrg. Mechanics Research Corp. (EMRC) Mich.</li><li>• Prakash Shah General Partner, Bliss &amp; Co., NYC Chairman &amp; CEO, Language Resources Inc., Boulder, CO</li><li>• Gajanan Sabnis President, Technology Transfer Consultant Silver Spring, MD</li></ul>	<ul style="list-style-type: none"><li>• How to Succeed at Entrepreneurship?</li><li>• What Does It Take?</li><li>• Do's &amp; Don'ts</li><li>• New Opportunities In: Manufacturing, Consulting, Import/Export.</li></ul>



# INTERFACE ELECTRONICS



Authorized IBM Value Added Dealer



We have a complete line of “ **IBM SYSTEMS**” for professionals & small businesses. For physicians, we have a complete turn-key system for Physicians Office Management. If you have requirements for IBM PC's and compatible peripherals, we offer a better alternative than retail stores.

Write or call TODAY for your needs

21134 Bridge  
Southfield, Michigan 48034

**(313) 352-8820**

Attn. Kirit Bakshi / Ketan Bakshi



# EVENING BANQUET

6:30 P.M.	Poolside Reception
7:30 P.M.	Dinner
8:30 P.M.	State of A.S.E.I. Address President Yogi Anand
8:40 P.M.	Awards Ceremony
9:00 P.M.	Keynote Address - Mr. P.S. Sahai Minister of Commerce Indian Embassy, Washington, D.C.  Guest Speaker - Mr. M. Santugi Director International Trade State of Michigan
9:45 P.M.	Entertainment
10:30 P.M.	Adjourn

## DINNER MENU

*Garden Salad, Blue Cotton Cheese Chicken,  
Spicy Vegetable/Nan, Rice Pilaf, Mango-Pecan Ice Cream*

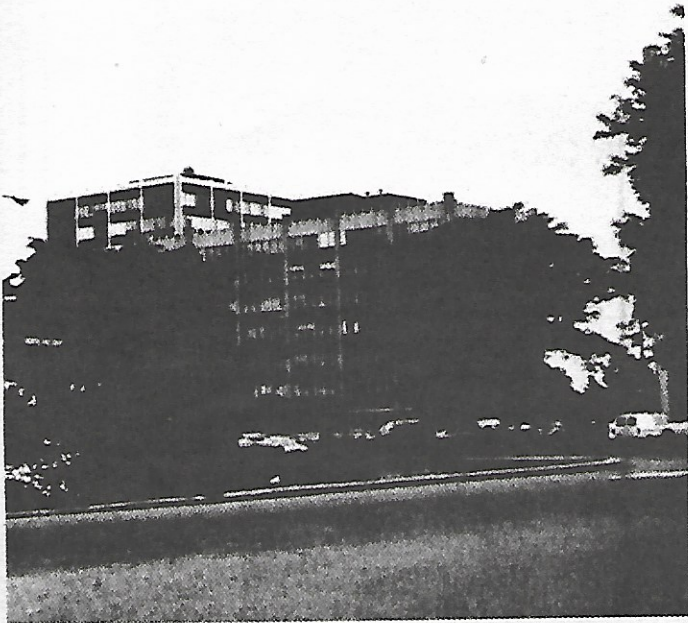
## ENTERTAINMENT

*A renowned dance troupe of Ms. Sudha Chandrashekhar*



**MAX M. ALI, M.D., F.R.C.S.**

20905 Greenfield  
Suite 200  
Southfield, MI 48075



**HCA HEMORRHOID  
CLINICS OF  
AMERICA**

*"The Alternative to Surgery"*

CRYOGENICS, BANDING & LASER  
Treatment of Hemorrhoids and other minor  
anorectal ailments.

- No hospitalization necessary.
- Most major insurance plans accepted.

**FREE BROCHURE**

**Call: 1-800-422-CURE**  
(Michigan residents only)

or

**(313) 557-7797**

(313) 349-3744

**P. D. Deo, Ph.D., P.E.**  
Director of Engineering



**and  
Associates,  
Incorporated**

Soils - Foundations - Construction Materials  
Metallurgical and Hydrogeology Consultants

46408 Grand River Ave., Novi, Michigan 48050

WITH COMPLIMENTS

**RAJ KHATRI, P.E. & L.S.**



***DJG & Associates, Inc.***  
CONSULTING ENGINEERS

(313) 574-1090

30500 Van Dyke, Suite 803  
Warren, MI 48093

TELEPHONE (313) 721-2100

**PRASAD & ASSOCIATES**

Engineers • Architects • Planners • Construction Managers

JALDHAR PRASAD P.E.  
PRINCIPAL

2909 S. WAYNE ROAD  
WAYNE, MICHIGAN 48184



## **ACRO**SERVICE CORP.

# **AUTOMOTIVE • DEFENSE**

**ENGINEERS • DESIGNERS • TECHNICIANS • PROGRAMMERS  
NEEDED FOR MAJOR NEW PROGRAMS BASED IN MICHIGAN**

- MICHIGANS FASTEST GROWING AUTOMOTIVE PLACEMENT SPECIALIST
- SPECIALIZING IN AUTOMOTIVE CONTRACT & AGENCY WORK
- WE OFFER TOP PAY & OUTSTANDING BENEFITS TO OUR EMPLOYEES

**RUSH RESUME TO:  
ACRO SERVICE CORP.  
P.O. BOX 9040  
LIVONIA, MI 48151**

## **DKI Group Engineers, Inc.**

**A Multi-Disciplinary  
MBE/WBE Engineering,  
Planning and Construction  
Management Firm**

**Environmental  
Energy  
Transportation**

*Corporate Headquarters:*  
Concord Commons  
1481 Ring Road  
P. O. Box 1339  
Calumet City, Illinois 60409  
312 891.0600

*"DKI Group Engineers has the capability to set up project offices anywhere in the U.S. or overseas. This allows the prime consultants to meet a project's MBE/WBE requirements, and maintain quality assurance of production with a DKI design/field team. DKI Group Engineers is one of the few MBE/WBE firms with this flexibility and quality level of expertise in environmental, energy and transportation engineering disciplines."*

*D.K. Gupta, PE, President  
DKI Group Engineers, Inc.*



### COMPUSOFT INTERNATIONAL

MANAGEMENT SYSTEMS CONSULTANTS  
19334 FIVE POINTS  
DETROIT, MICH. 48240  
PHONE (313) 537-8213

(313) 341-6972

### ASSOCIATED CONSULTING ENGINEERING SERVICES, INC.

CONSTANCIO F. MIRANDA, Ph.D., P.E.  
PRESIDENT

P.O. Box 21173  
COLLEGE PARK STATION  
DETROIT, MICHIGAN 48221

### RAMA RAO & ALFRED, INC.

CONSULTING ENGINEERS  
18447 WEST 8 MILE ROAD  
DETROIT, MICHIGAN 48219

ALFRED McDANIEL, P.E.  
VICE PRESIDENT

PHONE  
(313) 535-9580

### AMERICAN GRAPHITE CORPORATION

21756 DeQuindre Road  
Warren, Michigan 48091

GUY PATEL  
President

TEL: (313) 757-3540

- Transfer Super 8 and 16mm home movies onto video cassette
- Panasonic VCR for India
- Low, low price on blank tapes
- Franchise inquiries welcome



## Video Showcase

2418 Elizabeth Lake Road (Behind Pontiac Mall)  
Pontiac, Michigan 48053  
(313) 681-3339

TEXAS

MICHIGAN

NEW YORK

### PRAYAG ASSOCIATES

24161 Nilan Drive  
Novi, Mi. 48050

(313) 471-5786



SATYA B. SEHGAL, Ph.D.  
President

19720 Gerald  
Northville, MI 48167  
(313) 348-4425



### Associated Energy, Inc.

CONSULTING ENGINEERING SERVICES

Mechanical • Electrical • Chemical • Civil  
Energy • Quality Engineering

JACK AGRAWAL, PE, MBA  
(313) 644-5171





# Merrill Lynch

Merrill Lynch Pierce Fenner & Smith Inc.

A breed apart

**Gian C. Janveja, M.B.A., C.F.M.**

*Assistant Vice President*

## OFFERS SERVICES IN:

- Financial Planning
- Pension & Profit Sharing Plans
- KEOGH & IRA Plans
- Stocks, Bonds & Mutual Funds
- Tax Shelters
- Options
- Precious Metals
- Foreign Currencies

The Financial Plaza  
400 Town Center Drive  
Suite 400  
Dearborn, MI 48126  
(313) 336-4500 (Office)  
(313) 453-4567 (Home)

# GOOD NEWS

1. Now you can have life insurance protection for your Entire Life and premiums payable for Only 5 Years.
2. 1st year cash value accumulation around 90% of the premium.
3. Cash values grow, tax free, keeping pace with changing economy and inflation.
4. Policy loan available at 8% interest.

*To find out more about such "One-of-a-Kind" Whole Life Insurance plan please contact:*



**RAV PATEL**  
Independent Insurance Agent  
5139 Reuter  
Dearborn, MI 48126  
Tel: (313) 846-7369

# SKYLINE TRAVEL



IATA & ARC APPROVED

**25125 Michigan Ave.  
SUITE 202  
DEARBORN, MICHIGAN 48124**

For all your Domestic Travel Needs & Tour Packages,  
Cruises or Travel to Europe &  
All Other Travel Needs  
Such as trips to India, Pakistan,  
Bangladesh, Europe or any tours  
within the U.S. including Las Vegas and Hawaii.

Please Call:  
9 a.m. to 5 p.m.  
**(313) 277-2190**  
Evenings & Weekends  
**981-0936**  
Ashvin Parekh  
Charu Parekh



We are honored to  
be of service to the  
Indian Community  
in their times  
of need.

**JOHN N. Santeiu & SON INC.**  
**FUNERAL DIRECTORS**

*OVER FOUR DECADES OF SERVICE  
Our Services include cremation or Burial.*

**1139 INKSTER ROAD  
South of Ford Road  
TELEPHONE: 427-3800**



**GRAND OPENING AUGUST 16**

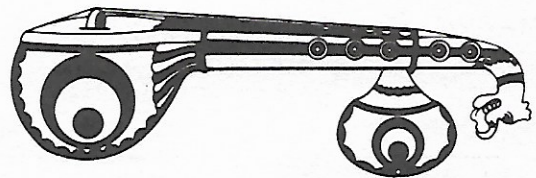
# Sitar

An authentic CUISINE of India specializing in best of  
Vegetarian and Non-vegetarian delicacies.

LOCATION: 29550 Grand River Avenue  
(1 Block W. of Middlebelt Road)  
Farmington Hills, MI 48024

TELEPHONE: (313) 477-9000

HOURS: 11:30 A.M. to 2:30 P.M.  
6:00 P.M. to 10:00 P.M.



## VAN DYKE MEDICAL LABORATORY

THE COMPLETE SERVICE LABORATORY

- FULL RANGE OF INDIVIDUAL TESTS AND PROFILES
- COMPREHENSIVE QUALITY CONTROL PROGRAM
- FULLY ACCREDITED
- EXTENSIVE BILLING SERVICE

O. GANESH, M.D., EXECUTIVE DIR.  
ANSELM OFODILE, PATHOLOGIST  
LINDA L. CARROLL, ADMINISTRATOR

V.D.M.L.  
22148 W. 9 MILE RD.  
SOUTHFIELD, MI 48034

(313) 353-9780  
(For Information contact Linda Carroll, Adm.)





# a.g. & associates inc.

product engineering division

Since 1977, A. G. & Associates, Inc., (AGA), has specialized in providing and supplementing the Client's TECHNICAL HUMAN RESOURCE capabilities in all phases of Project Management and Engineering of various Automotive, Commercial, Industrial and Utility projects.

The real key to AGA's success lies in the on-going development of a dynamic, creative, pace-setting ORGANIZATION possessing all the operating elements and dedicated to providing superior, responsive, and effective services.

AGA's MANAGEMENT and trained human resource experts and recruiters are as conversant with Science and Engineering as they are with the most advanced techniques of personnel management and counselling.

Through continuous ADVERTISING in trade publications and local and national newspapers, AGA maintains a current listing of available personnel for immediate placement.

AGA's computerized resume file facilitates the prompt selection of the right person to the right assignment—at a competitive price!

AGA channels skills and creates systems to deal with the technical management needs in today's advancing technology. AGA's successful achievement in this area has provided Clients with valuable assistance when needed.



## Product Design Engineering

- Automotive
- Military Vehicles
- Off-Road Vehicles
- Aerospace
- Electronics
- Body Design
- Chassis Design
- Transmission Design
- Electrical Systems Design
- Engine Design
- Finite Element Analysis
- Structures
- Plastics

## Production Engineering

- Fixture Design
- Gage Design
- Die Design
- Special Machine Design
- Conveyor Design
- Material Handling Systems
- Robotic Applications

## Technical Publications

- Graphic Illustration
- Technical Writing
- Documentation
- Translation

## Diversified Services

- Temporary Clerical Services
- Shop Personnel
- Computer-Aided Design
- Direct Placement

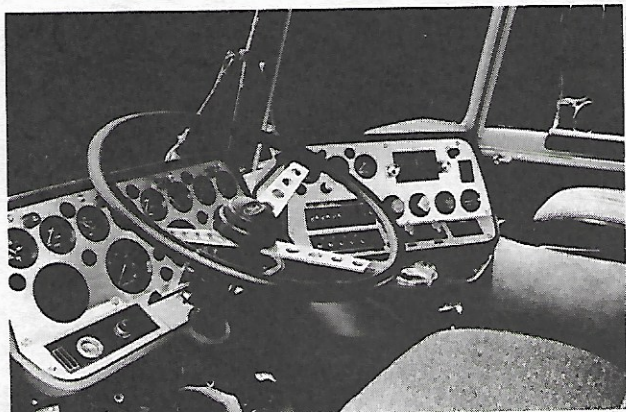
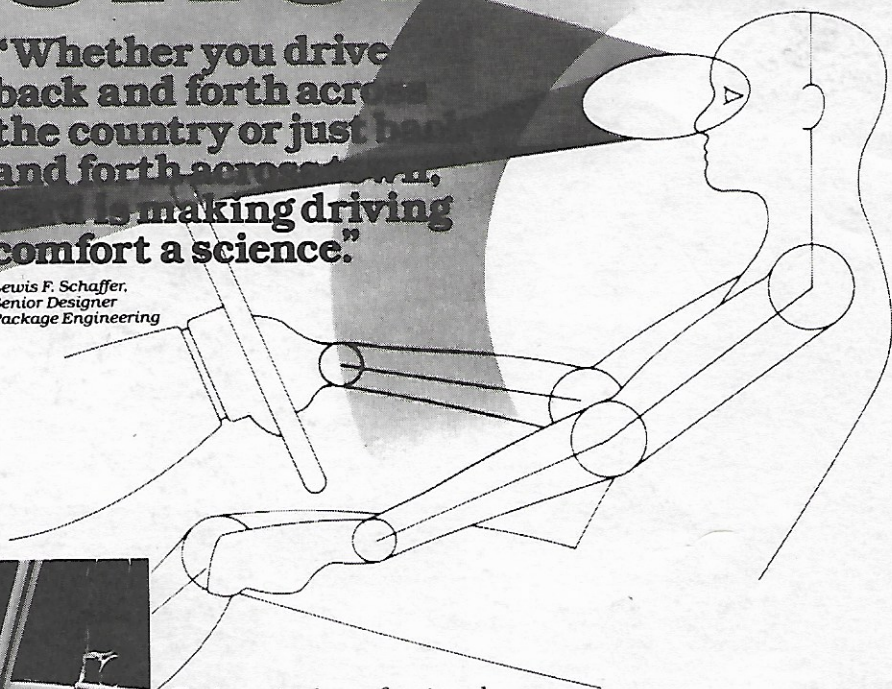


# ERGONOMICS



**"Whether you drive back and forth across the country or just back and forth across town, Ford is making driving comfort a science."**

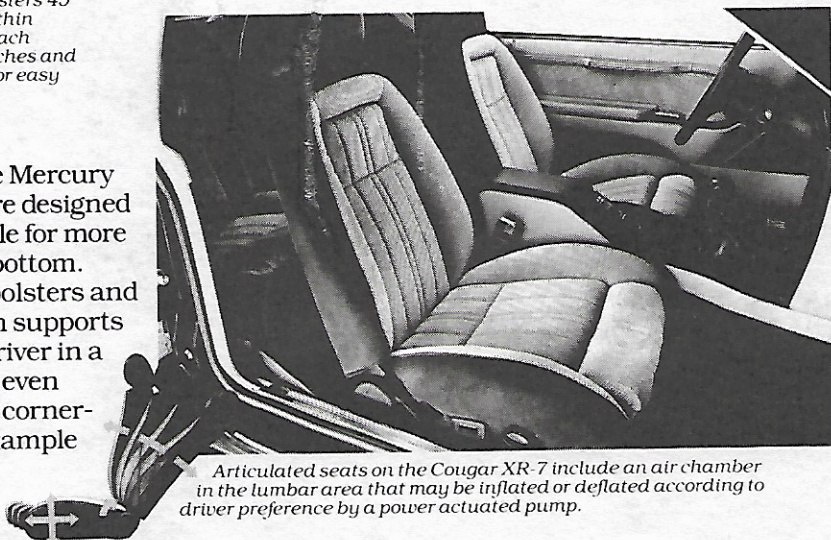
*Lewis F. Schaffer,  
Senior Designer  
Package Engineering*



*In this CL 9000, Ford clusters 45 gauges and controls within easy to read, easy to reach range. All gauges, switches and bulbs are plug-in type for easy service.*

To America's professional drivers, the cab of a heavy truck is their office and—for days at a time—their home. That's why Ford Motor Company ergonomic engineers design these cabs from the driver out.

The seats in the Mercury Cougar XR-7 are designed to be comfortable for more than just your bottom. Moveable seat bolsters and adjustable thigh supports help keep the driver in a stable position, even while the car is cornering. Another example of Ford Quality you can feel.



*Articulated seats on the Cougar XR-7 include an air chamber in the lumbar area that may be inflated or deflated according to driver preference by a power actuated pump.*

Get it together—Buckle up!



Ford • Lincoln • Mercury • Merkur  
Ford Trucks • Ford Tractors

**Quality  
is Job 1.**